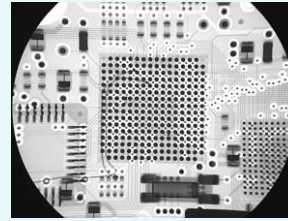
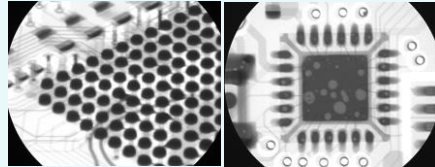


Affordable General Purpose, Compact X-Ray System

- New affordable standard for general purpose x-ray for quick verification of solder defects
- 15.5" x 21" parts handling capacity
- 4"/2" dual view Image Intensifier with HD camera
- Large-board, high density heat sink packaging inspection capability
- Easy to use and operate controls
- Low-maintenance
- 2-axis X/Y manual manipulator
- Tilt/Rotate Fixture Option
- Windows 7 Pro image processor (standard) with PXi-Pro Image Analysis
- Worldwide service and parts support



BGA Inspection

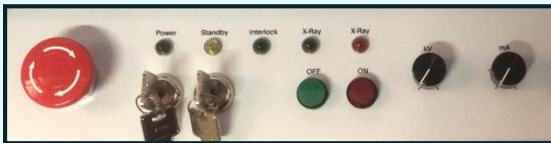


Oblique Viewing

QFN Inspection



CONTROL INTERFACE

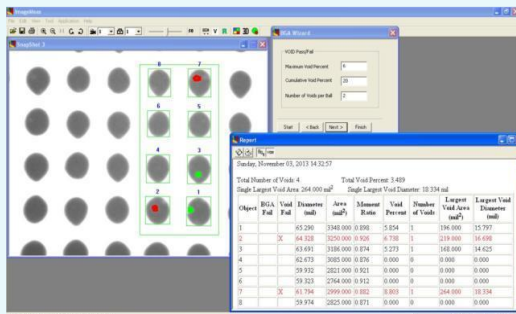


- Integrated x-ray controls
- Independent power and standby keys
- Magnification, Zoom, & Image Gain adjustment settings
- Sample tilt/rotation oblique angle (optional)
- Manual X-Y table motion controls

DISPLAY / ANALYSIS

PXi-Pro Image Analysis Software

- Frame averaging and quad view analysis
- Wide range of image enhancement and analysis tools (specific tool sets for QFN, BGA, Flip Chip, Discrete, and Gull Wing inspection)
- Modules for enhanced measurement capability
- Image storage and retrieval in tiff, bmp, and jpg formats



SPECIFICATIONS

Physical Dimensions

| | |
|---------------------------------|-----------------------------------|
| Dimensions | 57" (H) x 33" (W) x 44" (D) |
| | 142cm (H) x 84 cm (W) x 112cm (D) |
| Footprint..... | 10.0 sq. ft. (0.86 sq. m) |
| Weight..... | 1200 lbs. (544 kg) |
| Sample load height..... | Variable |
| Safe operating temperature..... | 32° to 99° F (0 to 40° C) |
| Power consumption..... | 500 watts at 120 VAC |
| Line voltage..... | 110 /230 VAC 50/60 Hz |

X-Ray Source

| | |
|-----------------------|-------------------------------------|
| Energy | 80kV, 0.150mA |
| Power..... | 12 Watts maximum |
| Focal spot size | 30 microns (auto adjusting w/power) |

Image Detector

| | |
|--------------------|--|
| Detector type..... | 4" /2" (10cm/5 cm) dual view X-ray image intensifier |
| Camera | HD, 1920 x 1080 pixels with zoom lens |
| Video output..... | USB 3.0 |
| Video display..... | High-resolution 23" flat panel LCD color monitor |

Image Performance

| | |
|--------------------------|--------------------------------------|
| Field-of-View..... | Variable |
| Max inspection area..... | 15.5" (X) x 18" (Y) on table surface |
| | 39.4cm (X) x 45.7cm (Y) |
| Max Board Handling..... | 15.5" x 21" Board Size |
| Spatial resolution..... | >36 lp/mm |
| Magnification..... | >250X |

Safety / Regulatory

Fail safe, interlocked enclosure. Complies with all U.S. and International standards for cabinet radiography systems. This product is in conformity with all applicable CDRH directives. CE compliant.